

PLANNING CRITERIA
CAYMAN ISLANDS DEVELOPMENT AND PLANNING REGULATIONS 2018 REVISION
BLOCK 8A PARCEL 127 IS ZONED HOTEL/TOURISM
SPECIFIC USE (S.U. 1) WITH A MIN. 20' SIDE SETBACKS
SITE AREA = 12,279 SQ. FT. (3.51 ACRES)
MAX. NUMBER OF APARTMENT UNITS ALLOWED = 250 (GROSS = 16,250 = 19 PROMISED)
MAX. GROSS FLOOR AREA = 1,000,000 SQ. FT. (231,000 SQ. FT. PROMISED - 45.7%)
MAX. SITE COVERAGE = 40% OF 302,798 = 123,119 SQ. FT. (14,813 SQ. FT. PROMISED - 45.7%)
TOTAL BUILT-UP AREA = 1,000,000 SQ. FT. (231,000 SQ. FT. PROMISED - 45.7%)
TOTAL BUILT-UP AREA = 50,987 SQ. FT.
19 APARTMENTS IN SPACES/ UNIT = 27 SPACES REQUIRED (16 = 2 DISABLED PROVIDED)

BREAKDOWN OF BUILDING AREAS (SQ. FT.)

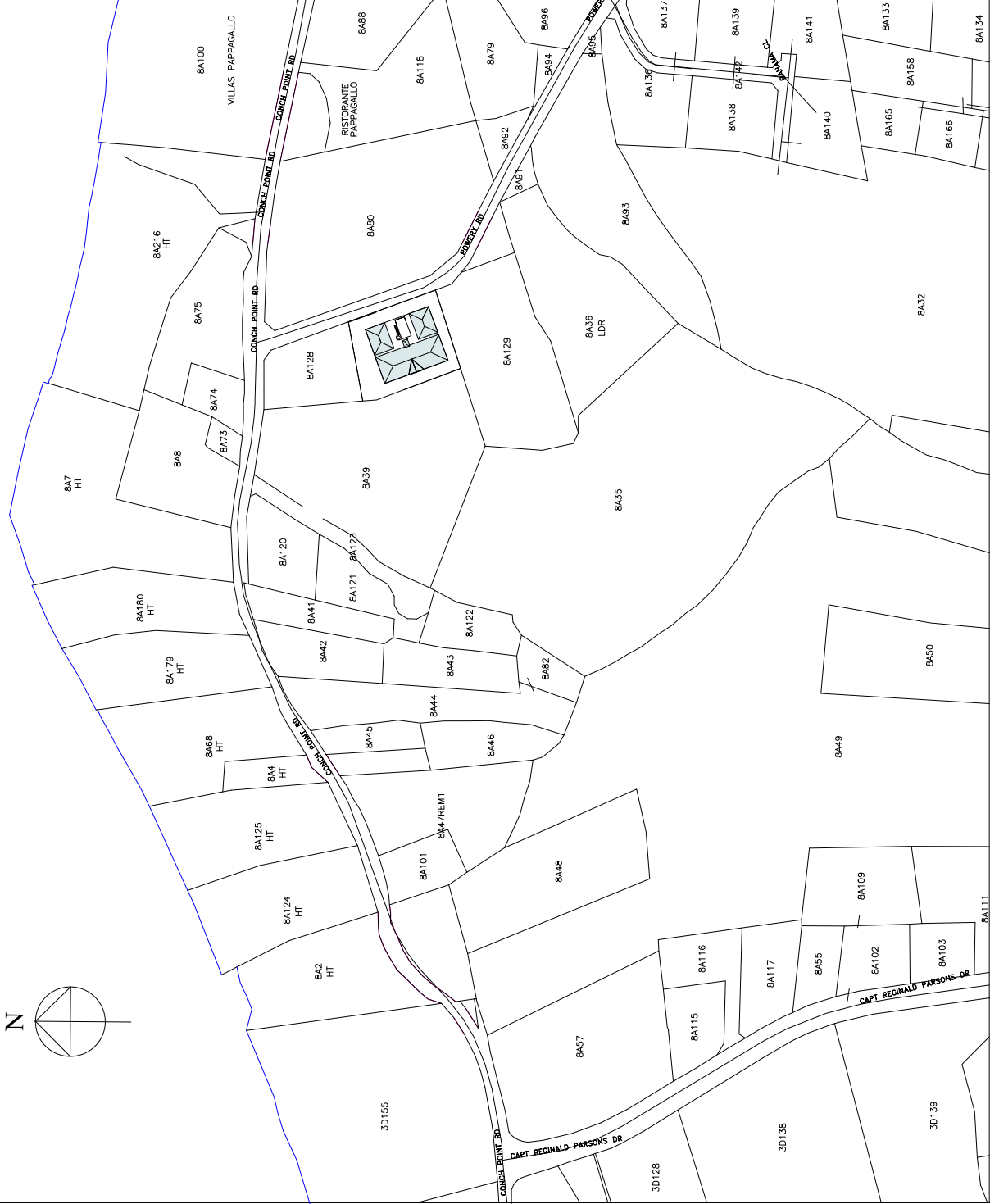
| GROUND FLOOR | Area | Value |
|-------------------------------|---------------|-------|
| Car Parking | 10,002 | |
| Stairs, Circulation, Elevator | 864 | |
| Swimming Pool | 1,284 | |
| Storage Units | 3,207 | |
| Garage | 3,207 | |
| Competition, Reception Area | 1,540 | |
| TOTAL GROUND FLOOR | 14,813 | |

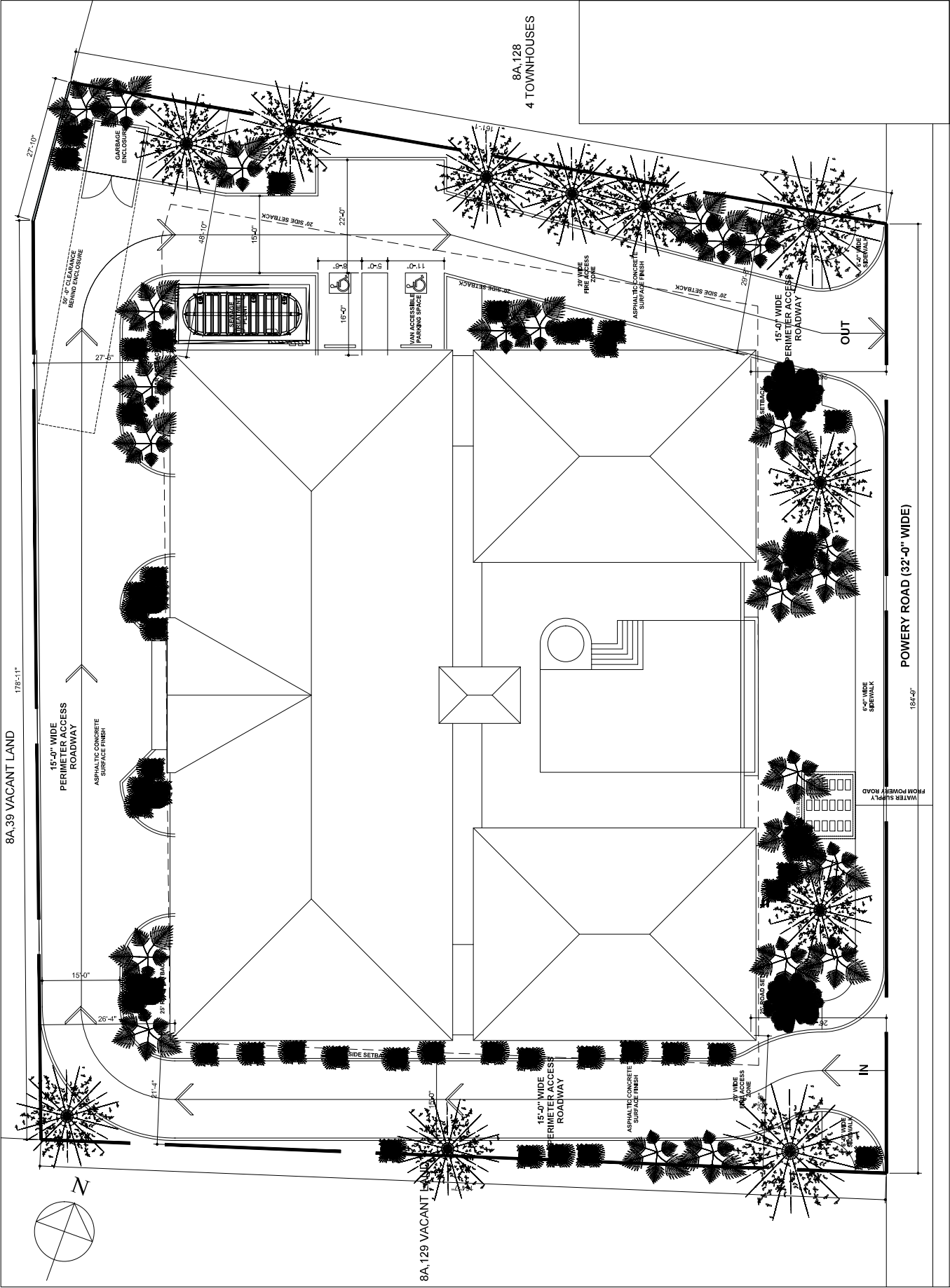
| SECOND FLOOR | Apartment Unit | Staircase | Health Club | Pool | Total Area |
|---|----------------|-----------|-------------|------|---------------|
| Type A: Apartment - 2.5 Baths, End Unit | 1,061 | 99 | | | 2,060 |
| Type A: Apartment - 2.5 Baths, End Unit | 1,061 | 99 | | | 2,060 |
| Type B: Apartment - 2.5 Baths, End Unit | 1,076 | 96 | | | 2,097 |
| Type B: Apartment - 2.5 Baths, End Unit | 1,076 | 96 | | | 2,097 |
| Type C: Apartment - 2.5 Baths, Mid Unit | 1,322 | 103 | | | 1,425 |
| Type C: Apartment - 2.5 Baths, Mid Unit | 1,322 | 103 | | | 1,425 |
| Stairs, Elevator & Covered Bakery | | | | | 974 |
| TOTAL SECOND FLOOR | | | | | 12,058 |

| THIRD FLOOR | Apartment Unit | Staircase | Health Club | Pool | Total Area |
|---|----------------|-----------|-------------|------|---------------|
| Type A: Apartment - 2.5 Baths, End Unit | 1,061 | 99 | | | 2,060 |
| Type A: Apartment - 2.5 Baths, End Unit | 1,061 | 99 | | | 2,060 |
| Type B: Apartment - 3.5 Baths, End Unit | 1,076 | 96 | | | 2,097 |
| Type B: Apartment - 3.5 Baths, End Unit | 1,076 | 96 | | | 2,097 |
| Type C: Apartment - 2.5 Baths, Mid Unit | 1,322 | 103 | | | 1,425 |
| Type C: Apartment - 2.5 Baths, Mid Unit | 1,322 | 103 | | | 1,425 |
| Stairs, Elevator & Covered Bakery | | | | | 974 |
| TOTAL THIRD FLOOR | | | | | 12,058 |

| FOURTH FLOOR | Apartment Unit | Staircase | Health Club | Pool | Total Area |
|---|----------------|-----------|-------------|------|---------------|
| Type A: Apartment - 2.5 Baths, End Unit | 1,061 | 99 | | | 2,060 |
| Type A: Apartment - 2.5 Baths, End Unit | 1,061 | 99 | | | 2,060 |
| Type B: Apartment - 3.5 Baths, End Unit | 1,076 | 96 | | | 2,097 |
| Type B: Apartment - 3.5 Baths, End Unit | 1,076 | 96 | | | 2,097 |
| Type C: Apartment - 2.5 Baths, Mid Unit | 1,322 | 103 | | | 1,425 |
| Type C: Apartment - 2.5 Baths, Mid Unit | 1,322 | 103 | | | 1,425 |
| Stairs, Elevator & Covered Bakery | | | | | 974 |
| TOTAL FOURTH FLOOR | | | | | 12,058 |

| TOTAL GROUND FLOOR | Value |
|---------------------------|---------------|
| TOTAL GROUND FLOOR | 50,987 |





| | |
|--------------------------------------|---|
| DATE | 2019 |
| PROJECT | 'AZUL' APARTMENTS FOR MRS DENISE FABRIZIO, P.O. BOX 1000, GRAND CAYMAN |
| BLOCK | 8A |
| PAGES | 157 |
| SITE PLAN WITH BUILDING FOOTPRINT | |

| | |
|------------|--------------|
| DATE | SEPT. 2019 |
| SCALE | 1/8" = 1'-0" |
| DRAWN BY | CCS Ltd. |
| CHECKED BY | CCS Ltd. |

| | |
|-------------|-------|
| PROJECT NO. | A-002 |
|-------------|-------|

